

Global Parts & Universal Service



**Supporting the World in the
Past, Present & Future**

Come for the Parts, Stay for the Service!



SUPPORTING THE WORLD IN THE PAST, PRESENT AND FUTURE

With the concept of becoming a "one stop shop" for all helicopter maintenance requirements, RSI has grown to include full non-destructive testing, paint, structural repair and avionics, as well as extensive inventory of parts for exchange.

PAST

Rotorcraft Support, Inc. began serving the helicopter industry in 1986 with a dedication to provide a dependable resource for rotorcraft maintenance and component overhaul.

PRESENT

Rotorcraft Support, Inc. has become an industry leader by setting an unparalleled standard of excellence. RSI has been recognized as a **PLATINUM** Customer Service Center by Bell Helicopter since the inception of the program. We take this award seriously and continually strive to maintain excellence in our organization.

FUTURE

Our vision for the future is simple and our commitment to it remains unwavering: Rotorcraft Support, Inc. will provide **Total Global Support** with a "One Stop Shop" concept. We have achieved these goals by continuously working to expand our services and increase our capabilities. With the "One Stop Shop" concept, Rotorcraft Support, Inc. controls the **quality of our product** and **minimizes customer downtime**.

RSI's staff of highly trained technicians and support team members pledge to our customers to refine our quality, expand our capabilities, increase our efficiency and elevate the superior level of customer service.

We would like to invite you to call any of RSI's team members to find out how we can meet all of your helicopter service needs.

The Rotorcraft Support Team

Table of Contents

Authorized Service Centers

Page 3



Component Overhaul

Page 5



Maintenance/Repair

Page 13



Avionics Installation/Repair

Page 14



Non-Destructive Testing

Page 23



Restorations and Completions

Page 24



Parts

Page 25



Structure Repair

Page 35



PMA's Distributor

Page 38



Aircraft Shipping

Page 44



Online Services

Page 46



Phone:
(818) 997-7667

Fax:
(818) 997-1513

Service Centers

www.RotorcraftSupport.com



- 205 •206 •212 •222
- 505 •407 •412 •429
- OH-58 •UH-1H
- 206 Series Cabin & Tailboom Fixture
- 205, 212, 412, UH-1H & UH-1N Tailboom Structural Repairs



Rolls-Royce®

- RR300 •RR250



- Leonardo 109 Series
- Leonardo 119 Series
- Leonardo 169 Series

Service Centers

AIRBUS

- H120/EC 120 Series
- H130/EC 130 Series
- H135/EC 135 Series
- H125/AS 350 Series
- H145/EC 145 Series
- AS 355 Series



- S-76 Series



- MD 500 Series
- MD 600 Series
- MD 900 Series



- R22 • R44 • R66



- Arriel 1 • Arriel 2
- Arrius 2

Bell Components

www.RotorcraftSupport.com

Rotorcraft Support, Inc. specializes in helicopter dynamic component overhaul, repairs and exchanges of Bell components worldwide. Experience the confidence of operating a helicopter equipped with components overhauled by RSI.



Swashplate Assembly



Tail Rotor Hub Assembly



T/R Pitch Change Assembly



T/R Gearbox Assembly (90°)



Main Rotor Hub Assembly



Freewheel Assembly



Main Rotor Hub



Transmission Assembly



Tail Rotor Hub Assembly

Bell Components



	PART NUMBER	DESCRIPTION	INSPECTION		
			REPAIR	OVERHAUL	
204/205	All P/N	MAIN DRIVESHAFT	X		
	204-012-101-XXX	MAIN ROTOR HUB ASSEMBLY	X	X	X
	204-040-366-XXX	MAST ASSEMBLY	X	X	X
	204-011-401-XXX	SCISSORS AND SLEEVE ASSEMBLY	X	X	X
	204-011-400-XXX	SWASHPLATE ASSEMBLY	X	X	X
	204-011-407-XXX	LINK ASSEMBLY	X	X	X
	204-011-326-XXX	STABILIZER BAR ASSEMBLY	X	X	X
	212-010-300-XXX	STABILIZER BAR ASSEMBLY	X	X	X
	204-040-009-XXX	TRANSMISSION ASSEMBLY	X	X	X
	205-040-001-XXX	TRANSMISSION ASSEMBLY	X	X	X
	212-040-001-XXX	TRANSMISSION ASSEMBLY	X	X	X
	204-040-003-XXX	42° GEARBOX ASSEMBLY	X	X	X
	212-040-003-XXX	42° GEARBOX ASSEMBLY	X	X	X
	204-040-012-XXX	90° GEARBOX ASSEMBLY	X	X	X
	209-040-400-XXX	90° GEARBOX ASSEMBLY	X	X	X
	212-040-004-XXX	90° GEARBOX ASSEMBLY	X	X	X
	204-011-701-XXX	TAIL ROTOR HUB ASSEMBLY	X	X	X
	204-011-801-XXX	TAIL ROTOR HUB ASSEMBLY	X	X	X
	212-010-701-XXX	TAIL ROTOR HUB ASSEMBLY	X	X	X
	212-011-701-XXX	TAIL ROTOR HUB ASSEMBLY	X	X	X
	All P/N	TAIL ROTOR PITCH CHANGE MECHANISM	X	X	X
	204-040-620-XXX	TAIL ROTOR DRIVESHAFT ASSEMBLY	X	X	X
	204-040-600-XXX	TAIL ROTOR DRIVESHAFT HANGAR ASSEMBLY	X	X	X
	212-040-600-XXX	TAIL ROTOR DRIVESHAFT HANGAR ASSEMBLY	X	X	X
	All P/N	TAIL ROTOR BLADE BEARING CHANGE	X	X	
	204-060-448-XXX	OIL COOLER BLOWER ASSEMBLY	X	X	X
	212-062-540-XXX	OIL COOLER BLOWER ASSEMBLY	X	X	X
	205-040-300-XXX	ROTOR BRAKE QUILL	X	X	X
	All P/N	ROTOR BRAKE	X	X	X
212	212-040-005-XXX	MAIN DRIVESHAFT	X	X	X
	204-012-101-XXX	MAIN ROTOR HUB ASSEMBLY	X	X	X
	204-040-366-XXX	MAST ASSEMBLY	X	X	X
	204-011-400-XXX	SWASHPLATE ASSEMBLY	X	X	X
	204-011-401-XXX	SCISSORS AND SLEEVE ASSEMBLY	X	X	X
	204-011-326-XXX	STABILIZER BAR ASSEMBLY	X	X	X
	212-010-300-XXX	STABILIZER BAR ASSEMBLY	X	X	X
	212-061-107-XXX	TRI-POD ASSEMBLY	X	X	X
	212-061-108-003	BI-POD ASSEMBLY	X	X	X
	212-040-001-XXX	TRANSMISSION ASSEMBLY	X	X	X
	212-040-003-XXX	42° GEARBOX ASSEMBLY	X	X	X
	212-040-004-XXX	90° GEARBOX ASSEMBLY	X	X	X
	212-010-701-XXX	TAIL ROTOR HUB ASSEMBLY	X	X	X
	212-011-701-XXX	TAIL ROTOR HUB ASSEMBLY	X	X	X
	All P/N	TAIL ROTOR PITCH CHANGE MECHANISM	X	X	X
	212-040-600-XXX	TAIL ROTOR DRIVESHAFT HANGAR ASSEMBLY	X	X	X
	212-010-750-XXX	TAIL ROTOR BLADE BEARING CHANGE	X	X	
	212-062-514-XXX	OIL COOLER BLOWER ASSEMBLY	X	X	X
	412-040-123-XXX	ROTOR BRAKE QUILL	X	X	X

If your requirements are not reflected in this listing, please contact us for additional capabilities

Phone:
(818) 997-7667

Fax:
(818) 997-1513

Bell Components

www.RotorcraftSupport.com



	PART NUMBER	DESCRIPTION	INSPECTION	REPAIR	OVERHAUL
UH-1	All P/N	MAIN DRIVESHAFT	X	X	X
	204-012-101-XXX	MAIN ROTOR HUB ASSEMBLY	X	X	X
	204-040-366-XXX	MAST ASSEMBLY	X	X	X
	204-011-400-XXX	SWASHPLATE AND SUPPORT ASSEMBLY	X	X	X
	204-011-401-XXX	SCISSORS AND SLEEVE ASSEMBLY	X	X	X
	204-011-326-XXX	STABILIZER BAR ASSEMBLY	X	X	X
	204-040-016-XXX	TRANSMISSION ASSEMBLY	X	X	X
	204-040-003-XXX	42° GEARBOX ASSEMBLY	X	X	X
	204-040-012-XXX	90° GEARBOX ASSEMBLY	X	X	X
	204-011-801-XXX	TAIL ROTOR HUB ASSEMBLY	X	X	X
	All P/N	TAIL ROTOR PITCH CHANGE MECHANISM	X	X	X
	All P/N	OIL COOLER BLOWER ASSEMBLY	X	X	X
	All P/N	ROTOR BRAKE QUILL	X	X	X
	204-011-702-XXX	TAIL ROTOR BLADE BEARING CHANGE	X	X	
UH-1H	204-040-600-XXX	TAIL ROTOR HANGAR ASSEMBLY	X	X	X
	All P/N	MAIN DRIVESHAFT	X	X	X
	204-012-101-XXX	MAIN ROTOR HUB ASSEMBLY	X	X	X
	204-040-366-XXX	MAST ASSEMBLY	X	X	X
	204-011-400-XXX	SWASHPLATE AND SUPPORT ASSEMBLY	X	X	X
	204-011-401-XXX	SCISSORS AND SLEEVE ASSEMBLY	X	X	X
	204-011-326-XXX	STABILIZER BAR ASSEMBLY	X	X	X
	212-010-300-XXX	STABILIZER BAR ASSEMBLY	X	X	X
	212-040-001-XXX	TRANSMISSION ASSEMBLY	X	X	X
	412-540-010-XXX	TRANSMISSION ASSEMBLY	X	X	X
	204-040-003-XXX	42° GEARBOX ASSEMBLY	X	X	X
	412-040-006-XXX	42° GEARBOX ASSEMBLY	X	X	X
	412-540-007-XXX	42° GEARBOX ASSEMBLY	X	X	X
	212-040-004-XXX	90° GEARBOX ASSEMBLY	X	X	X
407	412-540-008-XXX	90° GEARBOX ASSEMBLY	X	X	X
	212-010-701-XXX	TAIL ROTOR HUB ASSEMBLY	X	X	X
	All P/N	TAIL ROTOR PITCH CHANGE MECHANISM	X	X	X
	All P/N	OIL COOLER BLOWER ASSEMBLY	X	X	X
	All P/N	ROTOR BRAKE QUILL	X	X	X
	212-011-750-XXX	TAIL ROTOR BLADE BEARING CHANGE	X	X	
	412-040-600-XXX	TAIL ROTOR HANGAR ASSEMBLY	X	X	X
	412-040-601-XXX	TAIL ROTOR COUPLING ASSEMBLY	X	X	X
	407-010-100-XXX	MAIN ROTOR HUB ASSEMBLY	X	X	X
	407-040-011-XXX	MAST ASSEMBLY	X	X	X
	406-010-401-XXX	SWASHPLATE ASSEMBLY	X	X	X
	406-010-413-XXX	MAIN ROTOR PITCH LINK ASSEMBLY	X	X	X
	407-040-006-XXX	TRANSMISSION ASSEMBLY	X	X	X
	406-040-500-XXX	FREEWHEELING ASSEMBLY	X	X	X
	406-040-400-XXX	TAIL ROTOR GEARBOX ASSEMBLY	X	X	X
	407-540-400-XXX	TAIL ROTOR GEARBOX ASSEMBLY	X	X	X
	407-012-101-XXX	TAIL ROTOR HUB ASSEMBLY	X	X	X
	407-040-302-103	TAIL ROTOR DRIVESHAFT	X	X	X
	406-040-315-111	TAIL ROTOR DRIVESHAFT	X		
	206-340-301-XXX	ROTOR BRAKE DISC	X		
	206-340-301-XXX	ROTOR BRAKE CALIPER ASSEMBLY	X	X	X
	407-340-318-XXX	ROTOR BRAKE DISC	X		
	407-340-302-XXX	ROTOR BRAKE CALIPER ASSEMBLY	X	X	X

If your requirements are not reflected in this listing, please contact us for additional capabilities



67 D Street
Fillmore, CA 93015

Bell Components



	PART NUMBER	DESCRIPTION	INSPECTION	REPAIR	OVERHAUL
206A/B, B3 & OH-58	206-011-100-XXX	MAIN ROTOR HUB ASSEMBLY	X	X	X
	206-040-002-XXX	MAST ASSEMBLY	X	X	X
	206-010-450-XXX	SWASHPLATE ASSEMBLY	X	X	X
	206-040-002-XXX	TRANSMISSION ASSEMBLY	X	X	X
	206-040-270-XXX	FREEWHEELING ASSEMBLY	X	X	X
	206-040-015-XXX	MAIN DRIVESHAFT	X	X	X
	206-040-400-XXX	TAIL ROTOR GEARBOX ASSEMBLY	X	X	X
	206-040-402-XXX	TAIL ROTOR GEARBOX ASSEMBLY	X	X	X
	206-011-810-XXX	TAIL ROTOR HUB ASSEMBLY	X	X	X
	206-011-720-XXX	TAIL ROTOR PITCH CHANGE MECHANISM	X	X	X
	206-061-432-XXX	OIL COOLER BLOWER ASSEMBLY	X	X	X
	4000397-2	ROTOR BRAKE	X	X	X
	206-016-201-XXX	TAIL ROTOR BLADE BEARING CHANGE	X	X	
	206-031-589-001	LINK ASSEMBLY	X	X	X
206L SERIES	206-011-100-XXX	MAIN ROTOR HUB ASSEMBLY	X	X	X
	206-040-014-XXX	MAST ASSEMBLY	X	X	X
	206-010-450-XXX	SWASHPLATE ASSEMBLY	X	X	X
	206-040-004-XXX	TRANSMISSION ASSEMBLY	X	X	X
	206-040-270-XXX	FREEWHEELING ASSEMBLY	X	X	X
	206-040-015-XXX	MAIN DRIVESHAFT	X	X	X
	206-040-402-XXX	TAIL ROTOR GEARBOX ASSEMBLY	X	X	X
	206-011-810-XXX	TAIL ROTOR HUB ASSEMBLY	X	X	X
	206-011-720-XXX	TAIL ROTOR PITCH CHANGE MECHANISM	X	X	X
	206-061-432-XXX	OIL COOLER BLOWER ASSEMBLY	X	X	X
	4000397-2	ROTOR BRAKE ASSEMBLY (206L, L1 & L3)	X	X	X
	206-340-301-XXX	ROTOR BRAKE DISC (206L-4)	X		
	206-340-301-XXX	ROTOR BRAKE CALIPER ASSEMBLY (206L-4)	X	X	X
	206-016-201-XXX	TAIL ROTOR BLADE BEARING CHANGE	X	X	
412	212-040-005-XXX	MAIN DRIVESHAFT	X	X	X
	412-040-005-XXX	MAIN DRIVESHAFT	X	X	X
	412-010-100-XXX	MAIN ROTOR HUB ASSEMBLY	X	X	X
	412-010-401-XXX	HUB AND SLEEVE ASSEMBLY	X	X	X
	412-040-366-XXX	MAST ASSEMBLY	X	X	X
	412-010-402-XXX	SWASHPLATE ASSEMBLY	X	X	X
	412-040-002-XXX	TRANSMISSION ASSEMBLY	X	X	X
	212-040-003-XXX	42° GEARBOX ASSEMBLY	X	X	X
	212-040-004-XXX	90° GEARBOX ASSEMBLY	X	X	X
	212-011-701-XXX	TAIL ROTOR HUB ASSEMBLY	X	X	X
	All P/N	TAIL ROTOR PITCH CHANGE MECHANISM	X	X	X
	209-062-502-XXX	OIL COOLER BLOWER ASSEMBLY	X	X	X
	212-062-514-XXX	OIL COOLER BLOWER ASSEMBLY	X	X	X
	412-040-123-XXX	ROTOR BRAKE QUILL	X	X	X
	412-040-600-XXX	HANGER ASSEMBLY	X	X	X
	412-040-601-XXX	COUPLING ASSEMBLY	X	X	X
	412-010-425-XXX	PITCH LINK ASSEMBLY	X	X	X
	212-010-750-XXX	TAIL ROTOR BLADE BEARING CHANGE	X	X	

If your requirements are not reflected in this listing, please contact us for additional capabilities

Phone:
(818) 997-7667

Fax:
(818) 997-1513

Page 8

Airbus Helicopter Components

www.RotorcraftSupport.com

As an authorized Airbus Service Center, Rotorcraft Support, Inc. is constantly working to expand our capabilities to reduce costly downtime. RSI is committed to finding solutions to your Airbus needs through our exceptional quality and reliable service on our repairs and exchange components

AIRBUS



Crossbeam



Swashplate Assembly



**Hydraulic Pump
Pulley Assembly**



**Bevel Reduction
Gearbox**



**Anti-Vibrator
Assembly**



**Pitch Change
Spider Assembly**



**Hydraulic
Pump**



Shock Absorber



Boost Pump



T/R Gearbox

Airbus Helicopter Capabilities

AIRBUS

AS350 and AS355

	PART NUMBER	DESCRIPTION	INSPECTION	REPAIR	EXCHANGES
AIRBUS AS350 / AS355 SERIES	350A31-0033-XX	ANTIVIBRATOR ASSEMBLY	X	X	X
	350A37-1004-XX	SWASHPLATE ASSEMBLY	X	X	X
	350A32-0300-XX	MAIN GEARBOX ASSEMBLY			X
	350A38-0211-XX	CROSSBEAM ASSEMBLY	X	X	X
	350A75-2050-06	SHOCK ABSORBER	X	X	X
	350A75-2080-00	SHOCK ABSORBER	X	X	X
	350A33-0200-XX	TAIL ROTOR GEARBOX ASSEMBLY			X
	350A33-2030-00	PITCH CHANGE SPIDER ASSEMBLY	X	X	X
	350A33-2119-05	TAIL ROTOR HUB ASSEMBLY	X	X	X
	350A35-0130-XX	HYDRAULIC PUMP DRIVE ASSEMBLY	X	X	X
	704A34-3100-06	HYDRAULIC PUMP (ALT: A5026780)	X	X	X
	350A32-5010-XX	ROTOR BRAKE BOX ASSEMBLY	X	X	X
	350A32-0500-02	ROTOR BRAKE ASSEMBLY	X	X	X
	350A32-3088-01	ROTOR BRAKE FLANGE	X	X	X
	350A27-1910-XX	TAIL GEAROX ACTUATING ROD	X	X	X
	355A27-0072-01	LOAD COMPENSATOR LEVER ASSEMBLY	X	X	
	355A27-0082-01	LOAD COMPENSATOR LEVER ASSEMBLY	X	X	
	355A13-0520-XX	HORIZONTAL STABILIZER	X	X	X
	350A14-0020-XXXX	UPPER VERTICAL FIN	X	X	
	350A14-0021-XXXX	LOWER VERTICAL FIN	X	X	

MD Helicopters & Sikorsky

www.RotorcraftSupport.com



Pitch Control Assembly



Landing Gear Damper



Uni-Loc



Overrunning Clutch



T/R Gearbox



M/R Swashplate

MD Helicopters & Sikorsky



MD HELICOPTERS 500-600 SERIES	PART NUMBER	DESCRIPTION	INSPECTION	REPAIR	OVERHAUL
	369D26300	LANDING GEAR DAMPER	X	X	X
	369D26301	LANDING GEAR DAMPER	X	X	X
	269A5650	LANDING GEAR DAMPER	X	X	X
	369H6340	LANDING GEAR DAMPER	X	X	X
	369H92131	LANDING GEAR DAMPER	X	X	X
	369D27609	MAIN ROTOR SWASHPLATE (FIVE-BLADED)	X	X	X
	600N7632	MAIN ROTOR SWASHPLATE (SIX- BLADED)	X	X	X
	369A7609	MAIN ROTOR SWASHPLATE (FOUR-BLADED)	X	X	X
	369A5350	OVERRUNNING CLUTCH	X	X	X
	369F5450	OVERRUNNING CLUTCH	X	X	X
	369D21334	MAIN ROTOR PITCH BEARING HOUSING	X	X	X
	369D21701	4 BLADE TAIL ROTOR FORK	X	X	X
	369D21721	TAIL ROTOR FORK	X	X	X
	369H1728	TAIL ROTOR FORK	X	X	X
	369H1800	TAIL ROTOR PITCH CONTROL	X	X	X
	369D25400	TAIL ROTOR TRANSMISSION	X	X	X
	369D25300	TAIL ROTOR TRANSMISSION	X	X	X
	369A5400	TAIL ROTOR TRANSMISSION	X	X	X
	500N5400	FAN TRANSMISSION	X	X	X
	369D21600	TAIL ROTOR ASSEMBLY TWO BLADED	X	X	X
	369D21610	TAIL ROTOR ASSEMBLY FOUR BLADED	X	X	X
	369D25630	OIL COOLER BLOWER	X	X	
	369H5649	OIL COOLER BLOWER	X	X	
	600N5630	OIL COOLER BLOWER	X	X	
	369D21800	PITCH CONTROL ASSEMBLY (TWO - BLADED)	X	X	X
	369D21820	PITCH CONTROL ASSEMBLY (FOUR - BLADED)	X	X	X
	369A1400	MAIN ROTOR BLADE DAMPER	X	X	X
	369A1423	MAIN ROTOR BLADE DAMPER	X	X	X
	369D21706	T/R LINK	X	X	
	369A7010	ONE-WAY LOCK	X	X	X



SCHWEIZER 269/300	PART NUMBER	DESCRIPTION	INSPECTION	REPAIR	OVERHAUL
	269A1222	MAIN ROTOR BLADE ROTARY FRICTION DAMPERS	X	X	X
	269A1250	MAIN ROTOR BLADE ROTARY FRICTION DAMPERS	X	X	X
	269A1927	MAIN ROTOR BLADE ROTARY FRICTION DAMPERS	X	X	X
	269A3103	LANDING GEAR DAMPER	X	X	X
	269A3110	LANDING GEAR DAMPER	X	X	X
	269A3150	LANDING GEAR DAMPER -POPPET TYPE	X	X	X
	269A6034	LTS TAIL ROTOR AND PITCH CONTROL ASSEMBLY	X	X	X

Maintenance

www.RotorcraftSupport.com

RSI continues to enhance our extensive list of capabilities to meet our customers' helicopter needs, offering them the convenience of a one stop shop while maintaining the highest standards of safety, reliability and excellence.



Whether you need scheduled maintenance, unscheduled maintenance, upgrades, refurbishment, or a completion our highly-skilled, factory-trained maintenance technicians will exceed your expectations.



RSI has a simple vision: we want to offer our customers total global logistics support while reducing downtime and maintaining the highest standards of safety, reliability, and excellence.



AS350B3 Upgrade



Bell 206 Refurbishment



Bell 206B3 Upgrade

Rotorcraft Support, Inc. brings the most advanced technology from commercial and business aviation to the cockpit of your aircraft. Whether looking for upgrades, modifications or completions, RSI's staff of experienced technicians will help you design an aircraft navigation and communication systems to meet your mission requirements.

Avionics Dealerships



COBHAM



GARMIN



L3
communications
Avionics Systems

TECHNISONIC
Communications



AVIDYNE



FS ENGINEERING
INCORPORATED
Sound Quality. Sound Engineering.



TRIG

The G500H TXi is optimized for the rotorcraft market, and it builds upon the best features of Garmin's G600 and G500, which are for fixed-wing aircraft. The G500TXi offers capabilities such as more than 900 SafeTaxi airport diagrams, optional helicopter synthetic vision technology (HSVT), optional XM WX Satellite Weather with NEXRAD, and the option to display video from a forward looking infrared (FLIR) camera or other video sources. The GTN650 & GTN750 are the next generation of Garmin products, replacing the GNS430 & GNS530.



GTN 650 & GTN 750

GARMIN

AUTHORIZED DEALER



AERA 760



GTX 345



G500H TXi

Astronautics



Astronautics
Corporation of America

With a WAAS-enabled GPS source, the RoadRunner EFI allows pilots to make localizer performance with vertical guidance (LPV) approaches, as well as approaches with advisory vertical guidance, known as LP+V and LNAV+V.



The RoadRunner EFI's pilot-accessible USB port gives operators a path to implement updates and new features as they become available.

New features can have many operational benefits, including the continued improvement of situational awareness through advanced features such as synthetic vision system (SVS) and internal TAWS. With the RoadRunner EFI, these field-loaded updates are implemented quickly, with little disruption to your ongoing operations.



Latitude Technologies

The industry's smallest, lightest, and toughest aeronautical transceiver. The SkyNode® S100 offers complete tracking and data telemetry. Interfaces to multiple mapping and information management systems. 2-way data access everywhere you operate. The SkyNode® S200 is the world's lightest and most versatile integrated aeronautical communications device. The S200 provides security and crew safety for air/ground logistics applications. Phone and data access is available everywhere you operate.



The RC6000/A Control Display unit features an intuitive user display with large control buttons for gloved users and high vibration operation, cockpit certified to -45° C. The PTA12-100 Dialer/Adapter is a compact Dzus mounted telephone interface with a full function Touchtone keypad and LED display. The Iridium DPL Handset provides an easy user interface to any Iridium terminal. The Iridium DPL Handset supports SMS, Message Waiting Indication, Signal Strength meter and various language settings.



S100



S200 & Iridium
DPL Handset



S200 & Messaging
with PTA12-100



S200 & RC6000/A

Phone:
(818) 997-7667

Fax:
(818) 997-1513

Cobham's Digital Audio Control System (DACS) is a communications management system with the ability to control and distribute all audio in an aircraft, to/from all transceivers, receivers, and aural alert sources.

The Aircraft Digital Audio Control System consists of Audio Control Panels (ACP51 or ACP53), Audio Management Unit (AMU50) and Remote Memory (RM01).

The ACP51 and ACP53 are Dzus-mounted units that allow the operator to adjust volume, select a transceiver, and select the patient mode. It's a 'terminal' that monitors user switch selections and level adjustments, passing them along to the Audio Management Unit.

The AMU50 is able to support eight receivers, eight transceivers, two CVRs, six direct inputs, six ACPs and seven headsets. It integrates a warning generator providing eight tone/voice alarms with multiple levels of priority. The RM01 remotely stores the system's configuration and the aural warning file allowing replacement of the AMU50 without having to reconfigure the replacement unit. It has been especially designed for helicopters and light aircraft.

Cobham's Digital Audio Control System is standard fit in more civil production helicopters than any other system in the world.



ACP53 Audio Control Panel



RT-7000 PMR



ACP51 Audio Control Panel



AMU50 Audio Management Unit



RM01 Remote Memory

Features:

- Digital audio processing
- Flexible architecture
- Removable labels on ACP for easy configuration
- Integrated warning generator
- Optional NVG compatibility
- Designed for tactical operations

Advantages

- Reduced system weight
- Reduced complexity and installation cost
- Flexible & configurable with DACS software

COBHAM

Eagle Copters Generation II Digital Audio Systems are the Smallest, Lightest, and Most Capable Digital Audio Systems available for Special Mission, LE, Air Medical, and VIP Rotorcraft.

Unmatched in clarity and versatility, these systems provide the control you need to meet even the most demanding mission requirements, while maintaining the lowest installed weight. Designed in consultation with Technicians, Operators, and TFOs in the Law Enforcement and Air Medical community, you can count on a system that was designed with your mission in mind. All systems are backed by a 3 Year Parts and Labor Warranty to safeguard your investment.



**ANODYNE
ELECTRONICS
MANUFACTURING CORP.**

P139-HD GEN II Digital Audio System



**G13115
16 Transceiver
Digital Control Panel**



**G13000
Digital Audio Router
20 Transceivers
12 Headsets**



**G13116
8 Transceiver
+ 4 Receive
Digital Control Panel**



**G13160
Digital Audio Router
30 Transceivers
18 Headsets**

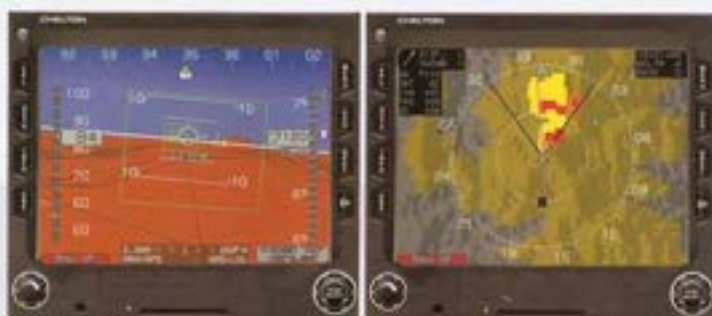
Custom Configured & NVG Compatible at No Additional Charge

**Phone:
(818) 997-7667**

**Fax:
(818) 997-1513**

The Genesys Aero Systems HeliSas is a stability augmentation system (SAS) and two-axis autopilot that provides attitude stabilization and force feedback to the cyclic control for helicopters with hydraulic controls. The system architecture is a parallel design that maintains the integrity of the basic helicopter flight control rods while using electro-mechanical servo actuators that are connected to the helicopter's flight control rods with parallel linkage.

The HeliSas is designed as an attitude-based system that accepts attitude source data using a combination of the installed attitude gyro or digital attitude heading reference system (AHRS) inputs and motion sensors located in the Flight Control Computer (FCC). The FCC commands the servo actuators to apply small corrections to the cyclic as required to maintain attitude.



HeliSAS



Electronic Flight Instrument System (EFIS)
3D Synthetic Vision EFIS from the leader in integrated cockpit avionics systems for special-mission aircraft. Genesys Aerosystems -- originally Chelton Flight Systems -- developed the world's first FAA-certified 3D Synthetic Vision flight display system and GPS/WAAS navigator.

The 3D Synthetic Vision EFIS from Genesys Aerosystems enhances safety, reduces pilot workload, increases flexibility and lowers cost of operation. Experience future-forward technology that sets a higher standard for advanced, end-to-end avionics in special mission, military trainer, commuter, general aviation, light jet aircraft and light-, medium-, heavy-lift rotorcraft.



IDU-680



IDU-450

Technisonic Communications

The TDFM-9000 / 9200 / 9300 series radios offer Project 25 Analog/Digital/Encrypted/ Multi-band AM/FM radio transceivers capable of meeting your most demanding operating requirements in both Phase I (FDMA) and Phase II (TDMA) modes.

The TDFM-9000 Series consists of multiple models which are configurable to meet each user's specific requirement. Each model is Dzus panel mount and each unit is completely self-contained (no remote mount box).

As one of the premier Technisonic dealers in the helicopter industry, Rotorcraft Support, Inc. can meet all of your avionics installation expectations.

TECHNISONIC Communications



TDAP-611



TDFM-136B



TDFM-9000

Becker Avionics

Becker Avionics has consistently proven itself a leader in the manufacture of avionics for helicopters. Becker delivers a rugged product that withstands the harsh environment typical of law enforcement operations.



**Remote Electronic Unit
REU 6100**



**Audio Control Unit
ACU 6100**



**Digital Player
DP 4100**

Phone:
(818) 997-7667

Fax:
(818) 997-1513

Page 20

You hold in your hand a life-size image of the remarkable Evolution Pro H PFD (Primary Flight Display) for helicopters. Aspen's EFIS display technology is a perfect fit for helicopter panels, with robust AHRS features and the latest in solid-state technology. Special vibration isolation design meets the rigors of demanding helicopter operations. Unparalleled reliability and accuracy make every mission safer. Breakthrough pricing makes EFIS display technology available for a fraction of the cost of traditional EFIS systems. The Pro H PFD delivers enhanced safety, reduced pilot workload and the flexibility to expand as your needs grow. The Pro H PFD is part of the Evolution Flight Display series, which can provide full PFD redundancy and many additional capabilities.

Pro H PFD Features:

- Special vibration mount meets DO-160F helicopter vibration standards.
- Airspeed and altitude tapes, with altitude alerter (and separate approach minimums alerting)
- Built-in GPS Steering¹
- Full electronic HSI with dual bearing pointers
- Base map with flight plan legs and waypoints, curved flight paths¹, and nearby nav aids
- Integral Air Data Computer and Attitude Heading Reference System (ADAHRS)
- Built-in backup battery
- Optional EHA upgrade provides traffic and weather displays^{2,3}

¹ With compatible GPS navigators

² Requires ARINC 735A compatible traffic system.

³ Requires Aspen EWR50 Weather Receiver or equivalent.



Multi-Display System



A New Way to Look at Avionics™



EFD1000H

FreeFlight Systems

Designed for business, regional, airline transport, and heavy rotary wing aircraft platforms, the RA-6500 provides enhanced features like DSP-based RF processing design, and also operates in higher altitudes, across a wider temperature range. The system can also be customized to meet UAS payload requirements.



RA-6500



Lynx NGT-9000 series. One-for-all. All-in-one. Designed as a form-fit replacement for your legacy transponder, the Lynx NGT-9000 is your ultimate panel-mounted ADS-B solution. In addition to being a new-generation 1090ES transponder, the NGT-9000 brings a host of additional capabilities into your aircraft.



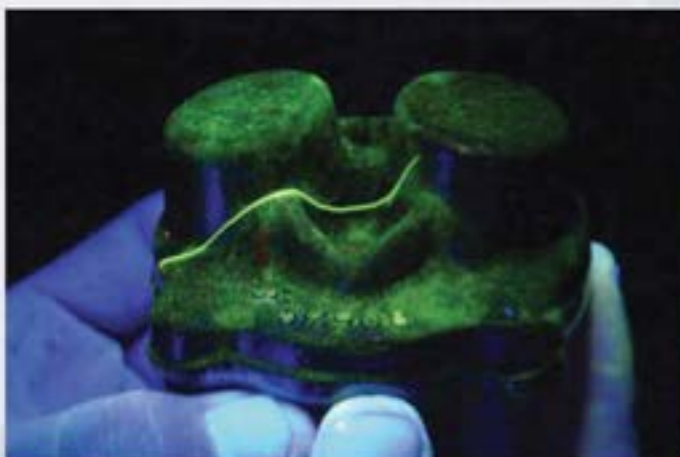
communications

Avionics Systems



Non-Destructive Testing

www.RotorcraftSupport.com



Capabilities

- Ultrasonic
- Radiography (X-ray)
- Liquid Fluorescent Penetrant
- Eddy Current
- Magnetic Particle
- Borescope/Visual inspections

NON-DESTRUCTIVE INSPECTIONS (NDI)

The inspection of a structure or component in any manner that will not impair its future usefulness.

The purpose of the inspection may be to detect flaws, measure geometric characteristics, determine material structure or composition, or it may characterize physical, electrical, or thermal properties without causing any changes in the part.

Certification

- Aerospace Industries Association (A.I.A.)
- National Aerospace Standards (NAS) 410, Revision 4
- American society for Nondestructive Testing (ASNT) SNT-TC-1A and CP-189, 1980 - 2021 Edition of Inspections

Rotorcraft Support Inc. technicians provide a comprehensive range of services. RSI provides the fixed wing and rotor wing industry with mobile and in-house Non Destructive Testing.

RSI is staffed with a Level III Technician meeting all ASNT-TC-1A and NAS 410 standards

Service Provided for:

- | | |
|--------------|------------------|
| • Bell | • Learjet |
| • Sikorsky | • Global Express |
| • Leonardo | • Twin Commander |
| • Hawker | • Gulfstream |
| • Beechcraft | • Rolls Royce |



Methods

Liquid Penetrant Inspection for all Types, Type I- Fluorescent and Type II- Visible Dye. All methods (A- Water -Washable, B - Post Emulsified (Lipophilic), C - Solvent Removable, D - Post Emulsified (Hydrophilic) Sensitivity Levels ($\frac{1}{2}$, 1, 2, 3 and 4)

Restorations and Completions



At RSI, we understand that helicopter restorations and completions are vast undertakings with many distinct elements, all of which require attention throughout the entire process. Just contemplating all the things that need to be accomplished can be overwhelming. At RSI, we have been performing helicopter restorations and completions since our inception in 1986. With over 30 years combined experience, RSI can facilitate every aspect of your project from inception to conclusion. All work is performed in accordance with the most current manufacturer's manuals and specifications as well as all FAA regulations. With state-of-the-art equipment and on-site Avionics Department, RSI can accomplish the majority of completion and/or restoration work in-house, which can significantly decrease costly downtime.

RSI is ready to take on your project.

Contact us for details and further information.



Phone:
(818) 997-7667

Fax:
(818) 997-1513

Page 24

Parts

www.RotorcraftSupport.com

At Rotorcraft Support, Inc., we are dedicated to total, global logistics support.



As a factory authorized service center for the leading helicopter manufacturers, including Bell, Airbus, MD, Leonardo, Safran Helicopter Engines, Sikorsky, Robinson and Rolls-Royce our spares inventory is always well-stocked.

We also maintain an extensive parts exchange pool. AOG services, quick turnaround time and excellent customer service are the reason helicopter operators worldwide choose RSI.



AirMark Filters



PART NUMBER	OEM PART NUMBER	DESCRIPTION	MODEL APPLICABILITY
WF335190	36952-1	FILTER ELEMENT	EUROCOPTER FRANCE AS350B, AS350B1, AS350C, AS350D, AS350D1, AS350B2, AS350B4
WF335198	157152	FILTER ELEMENT	EUROCOPTER FRANCE AS350B, AS350B1, AS350C, AS350D, AS350D1, AS350B2, AS350B4
WF336328	KD651531 1743645-01 222-366-643	FILTER ELEMENT KIT	EUROCOPTER FRANCE AS350B, AS350B1, AS350B2, AS350B4
WF335192	40VA12-4	FILTER ELEMENT FUEL	EUROCOPTER FRANCE AS350B, AS350B1, AS350C, AS350D, AS350D1, AS350B2, AS350B4
WF336342	03K088-08	FILTER ELEMENT LUBE	EUROCOPTER FRANCE AS350B, AS350B1, AS350C, AS350D, AS350D1, AS350B2, AS350B4
WF336342	03K088-08	FILTER ELEMENT LUBE	EUROCOPTER DEUTSCHLAND BO-105A, BO-105C, BO-105AS A1, BO-105S
WF335291	GG4100	FILTER ELEMENT	EUROCOPTER FRANCE AS350B, AS350B1, AS350B2, AS350B4
WF335189	4-300-216-02 4-300-216-01	OIL FILTER ELEMENT	EUROCOPTER FRANCE AS 350B, AS 350B1, AS350C, AS 350D, AS 350D1, AS 350B2, AS350B4

BELL HELICOPTER			
WF336316	KD651531 1743645-01 222-366-643	FILTER ELEMENT KIT	BELL 206, 206A, 206A-19 (OH-SBA), 206B, 206B-1, 206L, 206L-1, 206L-3, 206L-4, 222, 222B, 222U, 407
WF336347	047546-02 206-040-760-13	FILTER ELEMENT FUEL	BELL 206B, 206A, 206A-1, 206B, 222, 412, 412FP, 412CP
WF335199	205-076-034-3 75766665 AC-8993F-62	FILTER ELEMENT HYDRAULIC	BELL 205A, 205A-1, 230, 232, 232B, 232U
WF336342, P-1050	03K088-08	FILTER ELEMENT LUBE	BELL 47, 47B, 47B3, 47D, USAF H-13B, 47D1, USAF H-13D, H-13E, NAVY HTL-4, -5, 47E, NAVY HTL-8, 47G, USAF H-13H, -1B, 3B-1, TH127, 3B-2, 3B-2A, -4, -4A, -5, -5A, 47H-1, 47J, -2, -2A, 47K, BELL 206, 206A, 206A-1, OH-SBA, 206B, 206B-1, 206L, 206L-1, 206L-3, 206L-4
WF336346, P-1133	206-040-128-001	FILTER ELEMENT LUBE	BELL 206, 206A, 206A-1, OH-SBA, 206B, 206B1, 206L, 206L-1, 206L-3, 206L-4, 407, TETRAX LYCOMING 206, 206A, 206A-1, OH-SBA, 206B, 206B1, 206L, 206L-1, 206L-3, 206L-4, 407
WF338130	204-040-760-109 ALTERNATE 204-040-7620-105 047546-17	FILTER ELEMENT OIL	BELL 205A-1, 212, 412, 412 FP, 412 CP
KD101620-1	KD101620	KIT FUEL	BELL 205A-1
306001	306001	FUEL FILTER ASSEMBLY	BELL 206A, 206B
306055	222-366-623-101	FUEL FILTER ASSEMBLY	BELL 222, 407

MD HELICOPTERS			
KD651530	KD651530	FUEL	MD HELICOPTERS 3690, 369E, 369F, 500N, 600N
WF335200	12286	HYDRAULIC	MD HELICOPTERS 369HA, 369HM, 369H, 369D, 369E, 369F, 500N, 600N MD HELICOPTERS 369 ARMY YOH-6A, 369A, ARMY OH-6A, 369D, 369E, 369F, 369F, 369H, 369H, 369HM, 369H, 500N
211-1025	6874958 23033400	FILTER ELEMENT ASSEMBLY	ROLLS-ROYCE 25817, 817B, -817C, 817D, -C18, -C18A, -C18C, -C20, -C20B, -C20F, -C20L, -C20S, -C18B, -C28C, -C230, -C30G, -30G/2, -230M, -C30F, -C30B, -C30S
400600	6874958	FILTER ASSEMBLY	ROLLS-ROYCE 250-C18, -C18A, -18C, -C20, -C20B, -817, -817B
WF336343	6893177	FUEL	ROLLS-ROYCE 250-C18B T63-A-5A, C18, -C18A, C18B, -C18, -C20, -C20B, -C20C, T63-A-720, -C20F, -C20L, -C20S, -C20R, -C20H/L, -C20W

SIKORSKY HELICOPTER			
P-3542-1-P1	3542-1P2	FILTER HYDRAULIC	SIKORSKY S-61N
WF335202	AC-8952F-227Y2	FILTER ELEMENT LUBE	SIKORSKY S-76A, S-76B, S-76C

Phone:
(818) 997-7667

Fax:
(818) 997-1513

Servos & Actuators

www.RotorcraftSupport.com



Servo: 206-076-031-XXX



Servo: 206-076-062-XXX



Servo: SC8042-2



Servo: SC5083



Servo: AC67244



Servo: SC8042



Servo: AC67032



Actuator: 206-062-721-XXX

Starter Generators



150SG122Q



23032-027



23032-018



150SG117Q



200SGL130Q



23081-018

Instruments

AIRBUS



Phone:
(818) 997-7667

Fax:
(818) 997-1513

Engine Accessories

www.RotorcraftSupport.com

Rolls Royce 250 Series



Fuel Control



Fuel Control



Fuel Nozzle



PT Governor



Bleed Valve

Turbomeca



Exhaust Stack



Fuel Control



Tach Box



Bleed Valve

Lamps



4580



4596



4581



4626

LEDs



LED Beacon



LED Landing Lights



LED Position Light

Strobe Beacon



Kipper Tool

www.RotorcraftSupport.com

Rotorcraft Support, Inc. is a Kipper Tool Authorized Strategic Partner on products, tool and specialized aviation tool systems. Offering a complete Line of Hand, Power & Machine Tools and Tool Kits for the aviation industry.

- Field Aviation Tool Kits
- Tool Kit System Management
- Aerospace Grade Tools
- Support Vehicle Tools Kits
- Turn Key Solutions
- Aviation General Mechanic's Tool Kits



Kipper Tool is the industry leader in custom tool kits and life cycle tool management. Facilitating improved organization, productivity and profits while saving time on the job. Their capabilities are without limitation and range from kitting a single activity to outfitting an entire organization. Integrating the best tooling in the industry to fit your exact needs, and design your tool system to your specifications. All products are built in an ISO 9001:2015 environment with extreme attention to detail in every step of the process.

Swiss Rotor Solutions



Airbus Helicopter H125/AS350 MAXIMUM PILOT VIEW KIT

Provides unrestricted pilot view to the most important mission sectors (right side up, vertical down) by:

- Enlarging cabin floor window to 350% of existing floor window
- Adding a new bubble door, thus providing more space for the pilot's head and uninterrupted view by a huge, single piece window
- Maximizing visibility from vertical down to the upper door frame without almost any obstructions
- Providing 25mm (1.0in) more head (helmet) space at the upper door frame

Van Horn Aviation

VHA's UH-1H composite tail rotor blade features a carbon fiber spar and skin, fiberglass root fittings, and a stainless steel abrasion strip. Using advanced carbon fiber construction techniques result in a lighter but stronger rotor blade with a 2,400-hour life, which is double the life of the OEM tail rotor blade. The VHA rotor blade also takes advantage of a more efficient airfoil design and is nearly one inch wider than the current OEM blade.



The VHA 206 tail rotor blade features a carbon skin, titanium root fitting, electroformed nickle abrasion strip, and stainless steel spheres in the pitch change bearings.

RSI is an authorized Van Horn distributor. RSI gives you VHA composite blades, reduces noise, increases retirement life and increases stall margins.



Phone:
[818] 997-7667

Fax:
[818] 997-1513

Page 32

Inlet Barrier Filters

www.RotorcraftSupport.com

As an approved installer of popular Donaldson Aerospace & Defense Group Inlet Barrier Filters, RSI can help you best protect your helicopter's engine and potentially improve flight performance compared with particle separators. Ask us for information on Donaldson Aerospace & Defense Group's full line of commercial helicopter IBFs available for installation here at RSI.



AS350



MD500



Bell 205



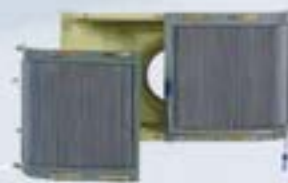
Donaldson.
FILTRATION SOLUTIONS
AEROSPACE & DEFENSE

Aerometals offers a high efficiency, low restriction engine inlet barrier filtration system with a low inlet pressure warning system. Many operators have reported a total elimination of erosion and FOD, maintaining engine compartment tolerances far beyond the expectation of the engine manufacturer. Aircraft operating along the Coast have also reported a significant reduction in salt buildup and related corrosion.

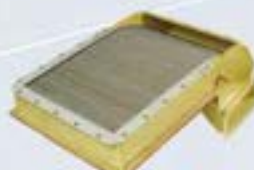
RSI can provide the complete installation of a barrier filtration system.



EC 120



Bell 407



AS 350



EC 120

Aerometals

Rotorcraft Support, Inc. holds the Supplemental Type Certificate to replace nickel cadmium (Ni-Cad) batteries with reliable Concorde Sealed Lead Acid Batteries. The or Bell 407, 430, Agusta 109 Series and H130/EC130.

The Concorde turbine starting battery will outperform a Ni-Cad battery in adverse temperature conditions, while providing safe and reliable operations. The Concorde battery is capable of multiple engine starts with short flight durations.

...the heart of your aircraft®

CONCORDE®

CONCORDE BATTERY REPLACEMENT

MANUFACTURE	MODEL	CONCORDE P/N	AMP-HOUR	CONCORDE P/N	AMP-HOUR	STC#	TCCA	EASA
BELL TEXTRON	BHT-407	RG407	17 AMPH	RG427	28 AMPH	SRO1456LA	SH17-17	10032879
BELL TEXTRON	BHT-407	RG407	17 AMPH	RG427	28 AMPH	SRO1456LA	SH17-17	N/A
BELL TEXTRON	BHT-430	RG407	17 AMPH	N/A	N/A	SRO1456LA	SH17-17	N/A
LEONARDO	A109 SERIES	RG407	17 AMPH	N/A	N/A	SRO1456LA	SH17-17	N/A
AIRBUS HELICOPTERS	EC130 SERIES	RG350	17 AMPH	N/A	N/A	SRO2073LA	VALIDATED	N/A



Structures

www.RotorcraftSupport.com

Structural repair is another aspect of the Rotorcraft Support, Inc. commitment to total support. We are equipped with a fuselage and tailboom fixture for the Bell model 206A/B and 206L series. In addition we have a certified tailboom fixture for the UH-1H, Bell 204, 205, 212 and 412. State-of-the-art equipment, combined with the knowledge and experience of our structural technicians, ensure a superior finished product.

Bell Approved Fixtures



Fuselage

**206A/B
206L**



Tailboom

**206A/B
206L**

Bell Approved Fixtures



Tailboom

**UH-1H, UH-1N,
204, 205, 212**

Fast Fin and Strake Kit



BLR's Tailboom Strakes improve climb and cruise flight, hover-hold, yaw control and fuel savings on single rotor helicopters. BLR's Fast Fin improves tail rotor efficiency by replacing non-structural portions with a simple, lightweight carbon – composite end cap to change the vertical fin shape.



Strake:
206, 206L, 204B, 205A-1,
205B, 212, 412, UH-1H,
UH-1N

Fast Fin:
212, 412, UH-1H, UH-1N,
205B



AIRBUS

H125/AS350 and AS355



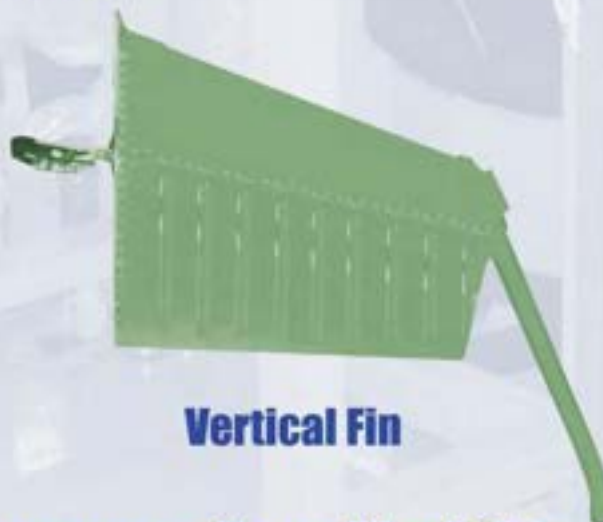
Vertical Fin



Horizontal Stabilizer



Tail Cone

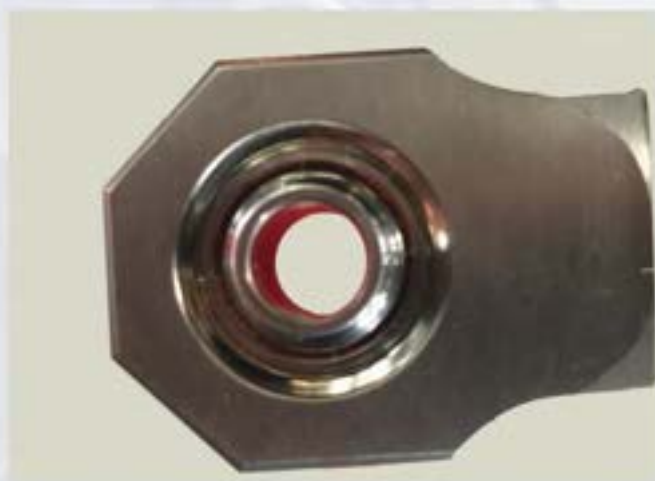


Vertical Fin

Repair and Exchange Available

Tail Rotor Pitch Change Spider End Ball PMA

Rotorcraft Support, Inc. is a distributor for the VisionAir PMA for the Tail Rotor Pitch Change Spider End Ball replacement on the AS350/H125 and the AS355.



P/N 350A33-2150-01VA

Phone:
(818) 997-7667

Fax:
(818) 997-1513

Page 38

Tail Rotor Control Tube PMA

Rotorcraft Support, Inc. is a distributor for the VisionAir PMA Tail Rotor Control Tube. The replacement Tail Rotor Control Tube reduces future maintenance cost by reducing Man Hours and Shipping costs. After the initial replacement the Rod End Extension Assembly can be removed from the control tube without removal of the Tail Gearbox and Control tube. RSI offers the Rod End Extension Assembly as an exchange or outright purchase.

For Eurocopter Models:

- H125/AS350
- AS355



Part
#350A27-1910-04VA
Alternate to
#350A27-1910-04



Load Compensator Lever Replacement

FAA approved repair procedure (RSI-14-0001) for
Load Compensator Lever Assembly
355A27-0072-01 and 355A27-0082-01



For Models:

- H125/AS350 and
- AS355 Series

PAD/LEAF PMA

VisionAir PMA Replacement Pad/Leaf
P/N 350A41-1076-20VA



For Eurocopter Models:
AS350/H125 and AS355

Phone:
(818) 997-7667

Fax:
(818) 997-1513

Crossbeam Nut PMA

VisionAir PMA for Crossbeam Retaining Nuts for models H125/AS350 Series, H130/EC130B4 and AS355 Series



**Rotorcraft
Support, Inc.
is a
Distributor**



DHS439-111.27VA
Alternate To:
DHS439-111.27



DHS439-111.22VA
Alternate To:
DHS439-111.22

Crimping Rivet PMA

VisionAir Crimping Rivet PMA for tail rotor control tube bearing replacement for models: H125/AS350 Series, H130/EC130B4 and AS355 Series



350A27-1912-20VA

Alternate To:
350A27-1912-20



**Rotorcraft
Support, Inc. is
a Distributor**

Rotating Spider PMA

VisionAir PMA Replacement Rotating Spider Tube for H125/AS350 Series and AS355 Series Tail Rotor Spider Assembly



350A33-2129-03VA

Alternate To:
350A33-2129-XX

Phone:
[818] 997-7667

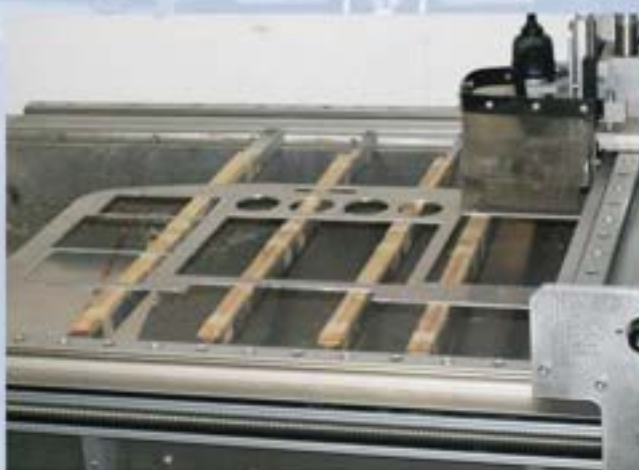
Fax:
[818] 997-1513

Page 42

Custom Cockpit Panel Design

www.RotorcraftSupport.com

Rotorcraft Support, Inc. utilizes state-of-the-art equipment, such as a CAD-operated panel cutter to ensure the completed product meets your approval and RSI's high standard of quality.



Aircraft Import/Export



Delivering Helicopters Around The World

Rotorcraft Support, Inc. accommodates all of your international and domestic helicopter shipping needs.

RSI can provide you with required inspections for issuance of Export or Import Certificate of Airworthiness as well as aircraft teardown and loading.

To facilitate your import or export process, RSI has a Designated Airworthiness Representative on staff. We perform all aircraft records and regulatory research.



Phone:
[818] 997-7667

Fax:
[818] 997-1513

Helicopter sales

www.RotorcraftSupport.com

RSI's longevity in the helicopter sales industry is the result of providing service which extends beyond our competitors'. We provide acquisition and sales services that translate to complete support throughout your entire project. From pre-purchase inspections through continuing maintenance, our extensive knowledge of the helicopter sales industry and OEM affiliations make it possible for us to accommodate your specific needs.

Please refer to our website for new listings.



We Offer a Variety of Helicopter Sales Related Services:

- Pre-purchase Inspections
- Complete Record Research
- Designated Airworthiness Representative on Staff
- Import / Export Certificate of Airworthiness

Rotorcraft Support Website

Please visit our website to get more detailed information on our services, contact our staff or get directions to our facility.

We have also added the ability to submit request for quotes on parts or services as well as directly order parts from the website.

New customers and vendors will find various on-line forms that will assist working with RSI.

We Make it Easy to Get What You Need

- Request For Service Quote
- Request For Parts Quote
- Order Parts
- Print New Customer Forms

Right from your device!



Have a Quick Question? Not Sure Who to Contact?

Use the Quick Contact Area on our homepage to send a question or request to RSI. We will make sure the proper person or department replies as soon as possible.

CONTACT US

Main Switchboard
(818) 997-7667

Phone:
(818) 997-7667

Fax:
(818) 997-1513



Phillip G. DiFiore
President and
Director of Maintenance
Phil@RotorcraftSupport.com



Teri Neville
Vice President
Teri@RotorcraftSupport.com



Jeffrey M. Teubner
Vice President
Quality & Technical Operations
Jeffrey@RotorcraftSupport.com



Deanna Keel
Executive Assistant, Records
Department Administrator
Deanna@RotorcraftSupport.com



Leslie Ramonette
Component Shop Administrator
and Records Specialist
Leslie@RotorcraftSupport.com



Keys Miller
Business Development
Keys@RotorcraftSupport.com



Pete Boeller
Avionics
Pete@RotorcraftSupport.com



Adrian Praeuner
Shop Foreman
Adrian@RotorcraftSupport.com



Sean Eason
Shop Lead
Sean@RotorcraftSupport.com



Chris Cancelosi
Sales Representative
Chris@RotorcraftSupport.com



Veronica Lozano
Sales/Purchasing
Veronica@RotorcraftSupport.com



Matthew Roach
Sales/Purchasing
Matt@RotorcraftSupport.com



Scout M. DiFiore
Assistant Security Officer



Gunner G. DiFiore
Chief Security Officer



Sir Huey Bell
Chief Security Officer
Huey@RotorcraftSupport.com